



FFORDD DARWIN

BARRY

FFORDD DARWIN

BARRY, CF63 4RS

PRICE RANGE

£280,000 -

FREEHOLD



3 Bed



2 Bath



851.00 sq ft

In the desirable East Quay at Latitude estate, this charming mid-terrace house on Ffordd Darwin in Barry presents an excellent opportunity for families and professionals alike. Spanning an impressive 851 square feet, this immaculately presented three-bedroom home boasts a modern design and a welcoming atmosphere.

As you enter, you are greeted by a spacious reception room, perfect for relaxation or entertaining guests. The well-appointed kitchen and dining area provide a functional space for family meals and gatherings. The property features two bathrooms plus w/c, ensuring convenience for all residents.

One of the standout features of this home is its prime location, overlooking the docks. Residents will appreciate the close proximity to local shops, schools, and public transport routes, making daily commutes and errands effortless.

Additionally, the property includes two off-road parking spaces, a valuable asset. Offered for sale with no chain, this home is ready for you to move in and make it your own. Whether you are a first-time buyer or looking to downsize, this delightful property is not to be missed. Come and experience the charm and convenience of life at East Quay @ Latitude.

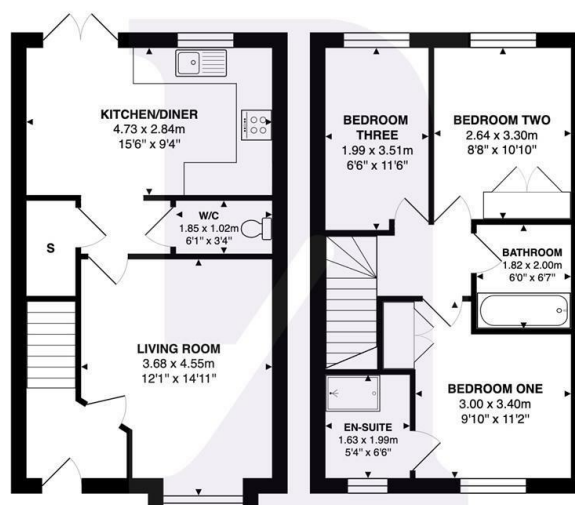




Energy Efficiency Rating		
	Current	Potential
Very energy efficient - lower running costs		
(92 plus) A		97
(81-91) B	85	
(69-80) C		
(55-68) D		
(39-54) E		
(21-38) F		
(1-20) G		
Not energy efficient - higher running costs		
England & Wales	EU Directive 2002/91/EC	



Ffordd Darwin, Barry, CF63 4RS



Total Area: 79.0 m² ... 851 ft²

All measurements are approximate and for display purposes only

BARRY & THE VALE'S HOME FOR

STYLISH SALES
& LETTINGS



KNIGHTS